

CERTIFICATE OF LOCATION OF GOVERNMENT CORNER

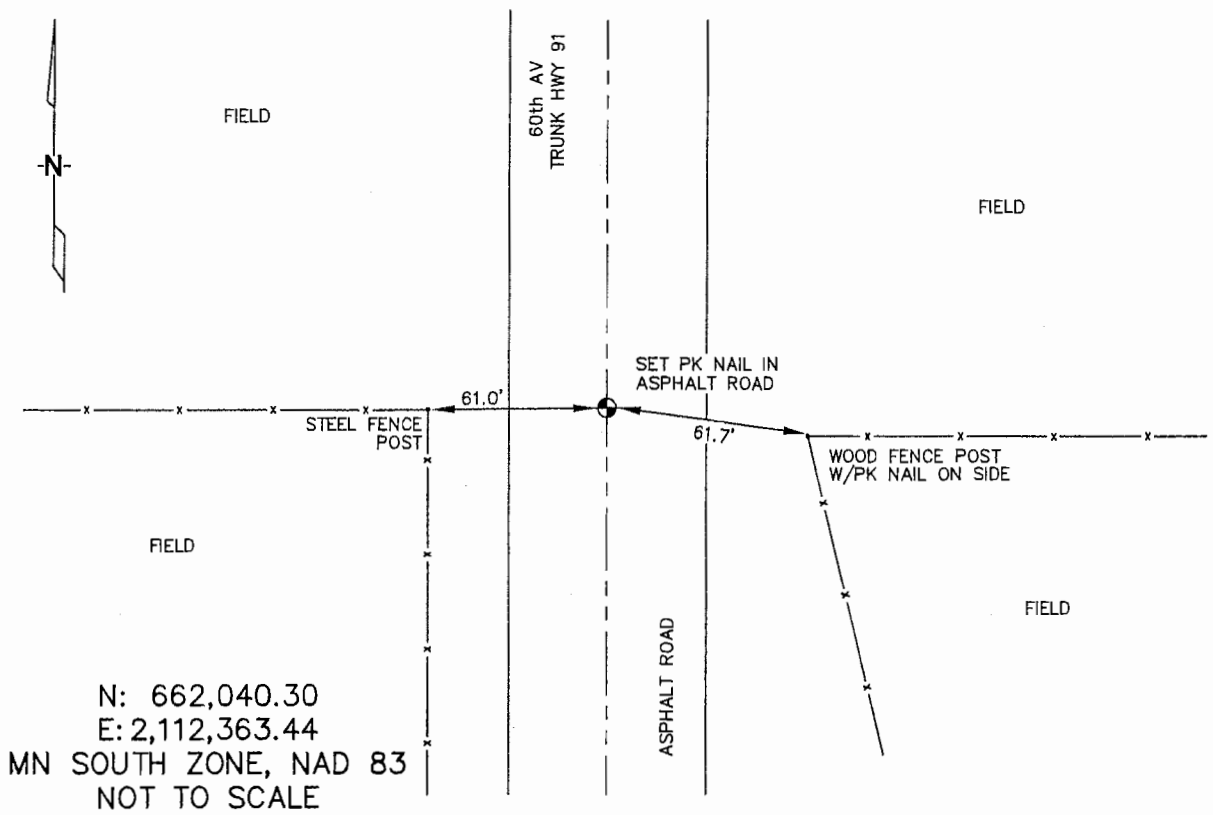
WEST 1/4 Corner of Section 18, Township 105N, Range 42W 5TH P.M.

STATE OF MINNESOTA, County of MURRAY

At the corner location shown on the sketch :

- On _____ found _____
- left monument as found, lowered monument, removed monument (explain)
- On 3/22/2006 set PK NAIL IN C/L OF ASPHALT, OPPOSITE FENCE LINES RUNNING WEST.

Sketch of reference ties



Statement of evidence relative to this corner location is on back page

I hereby certify that this document and the data contained herein was prepared by me or under my direct supervision.

Thomas V. Zeff 5/19/06
 Thomas V. Zeff Date
 Registration No. 44563

- Land Surveyor, Professional Engineer
- County Surveyor, County Engineer

OFFICE OF THE COUNTY RECORDER

County of _____

SEP 28 2006

I hereby certify that this document was filed in the Co. Recorders office at _____ .M. on the day of _____ A.D. , 20

County Recorder James V. Johnson
 By _____, Deputy

DOCUMENT NO. _____

STATEMENT OF EVIDENCE:

WEST 1/4 CORNER, SECTION 18, T. 105 N., R. 42 W.,
MURRAY COUNTY, MINNESOTA

- 1861 J.W. Myers, US. Deputy Surveyor, monumented west range line.
- 4/29/1901 Murray Co. placed a cedar post, no ties.
- 9/20/1927 Murray Co. placed a stone.
Ties: fence corner SE-32.8' & S-13.9'
fence corner SW-45.7' & S-12.0'
- ? Date: MN DOT R/W Map for Trunk Highway 91, calls for the 1/4 corner to be at the intersection of north-south roads and east-west fences.
- 3/22/2006 Uiteig Engineers, Inc., Survey Crew, Dennis Lavallie Party Chief, found nothing. Set a PK nail in the C/L of an asphalt road, opposite a fence line running west.
Ties: SE-61.7' to PK nail in wood, fence post;
W-61.0'to steel, corner, fence post.